

Medi-Dose[®], Inc.

Zebra LP 2844 Direct Thermal Printer Instructions

Thank you for purchasing this Zebra LP2844 from Medi-Dose. All of our Thermal Labels have been tested with this printer model.

PLEASE NOTE – All of these instructions must be followed exactly for your printer to perform correctly with MILT software.

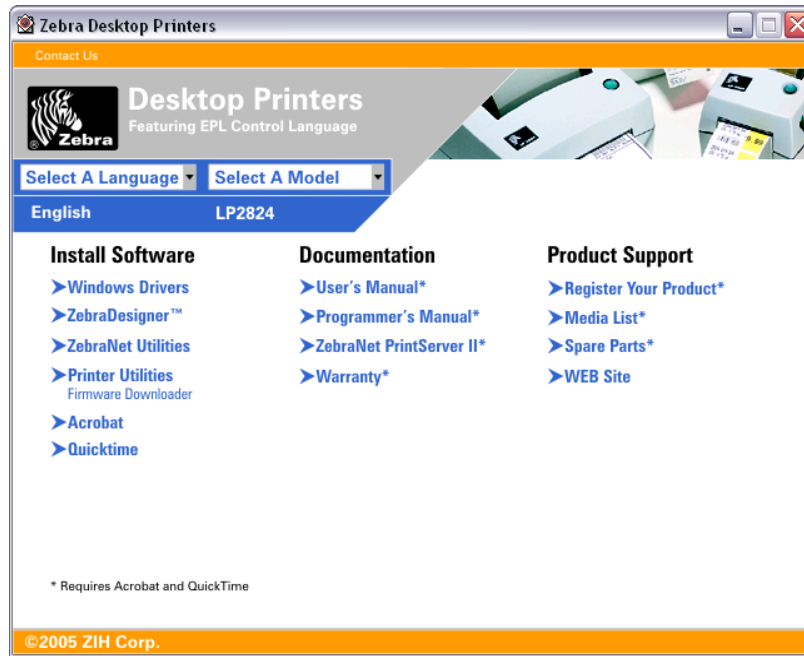
1. **Before you plug your printer into your computer**, please insert this CD into your drive.

If you do not have a CD here,

Download **53515.exe** file from

<http://www.medidose.com/support>

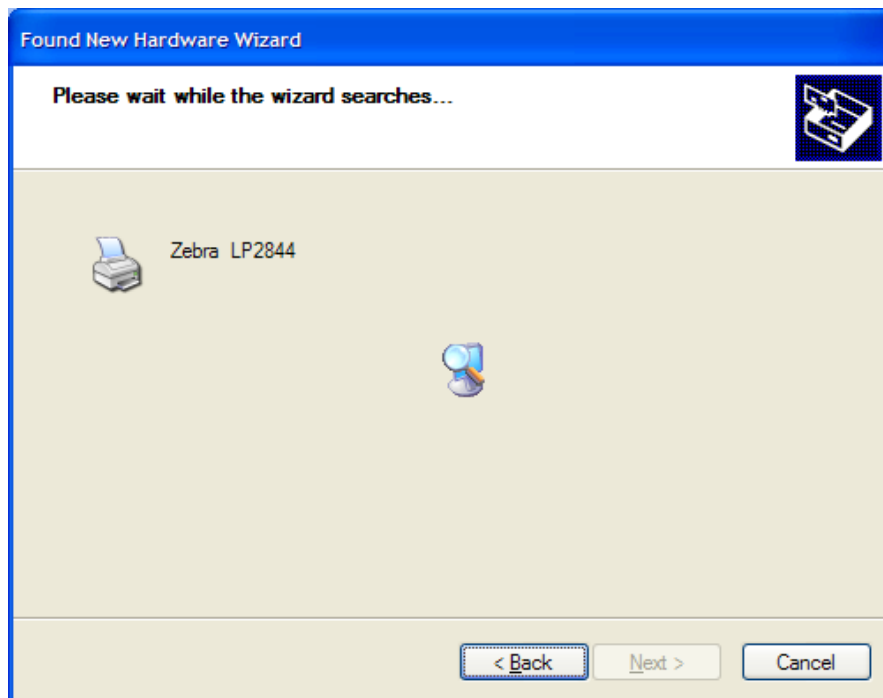
2. The CD will auto-run. Click the X to close this window.



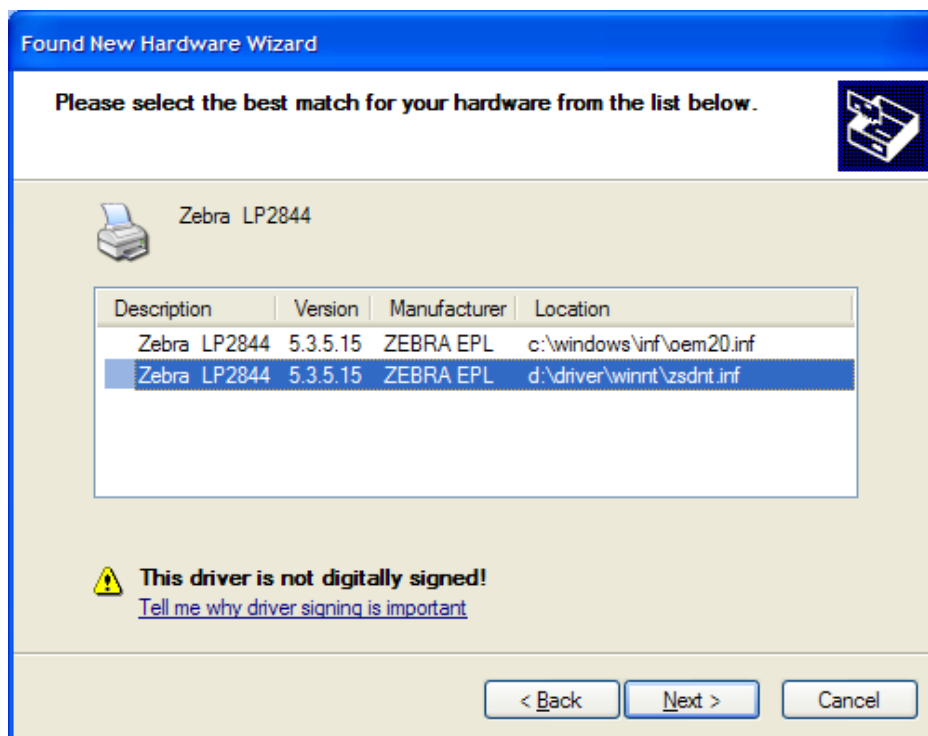
3. Now plug the power into your new printer, turn it on and connect the **USB cable** from the printer to the computer. The **Found New Hardware Wizard** will appear as shown below. Choose "Install the software automatically" and click **NEXT**:



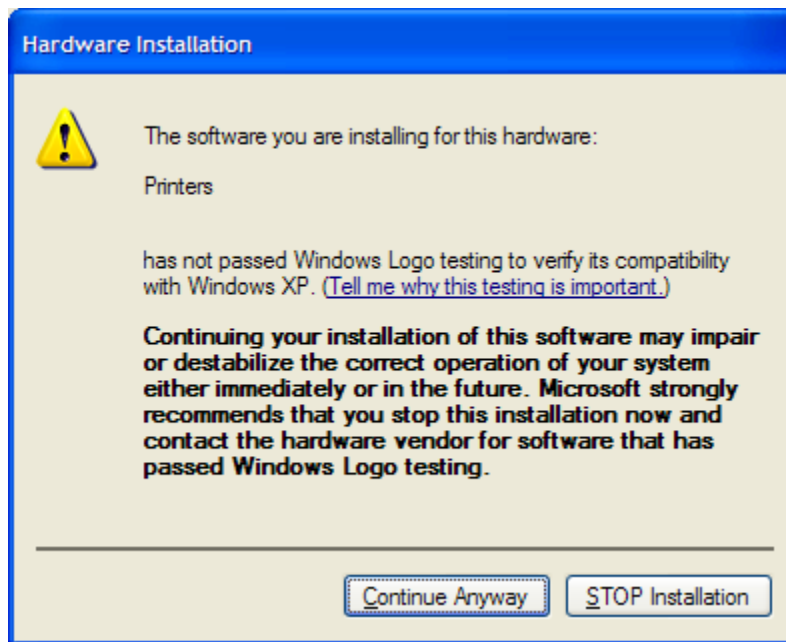
4. The Wizard will search for a driver.



5. Select the driver as shown on the screen below and click **NEXT**:

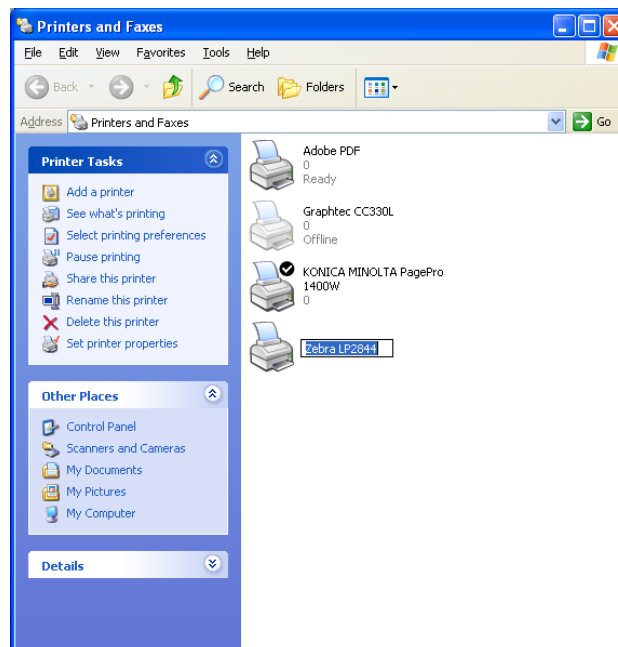


6. If you receive this warning, click **CONTINUE ANYWAY**:

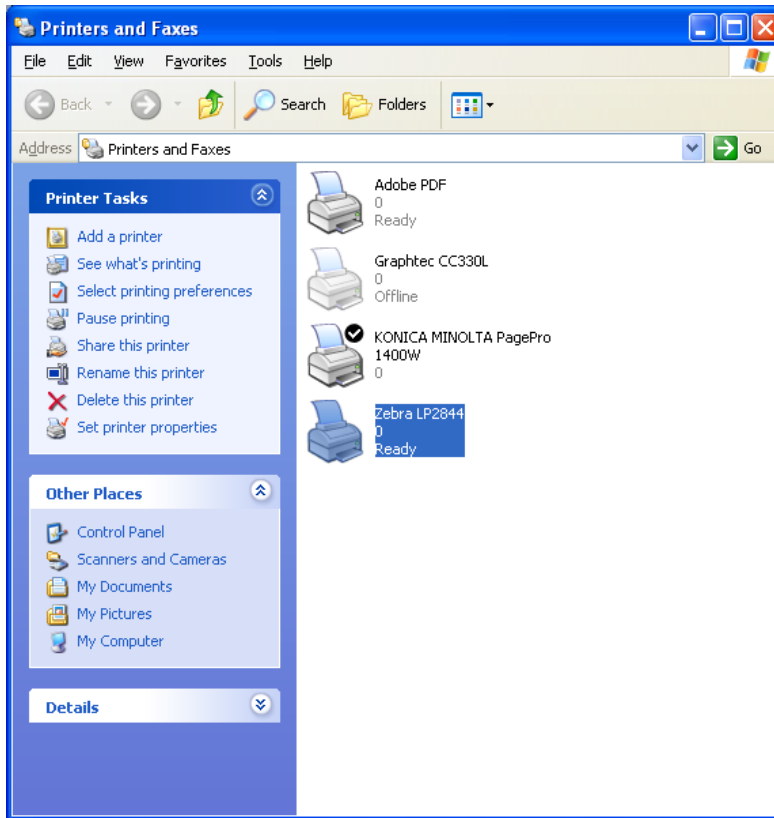


7. The Wizard will install the printer.

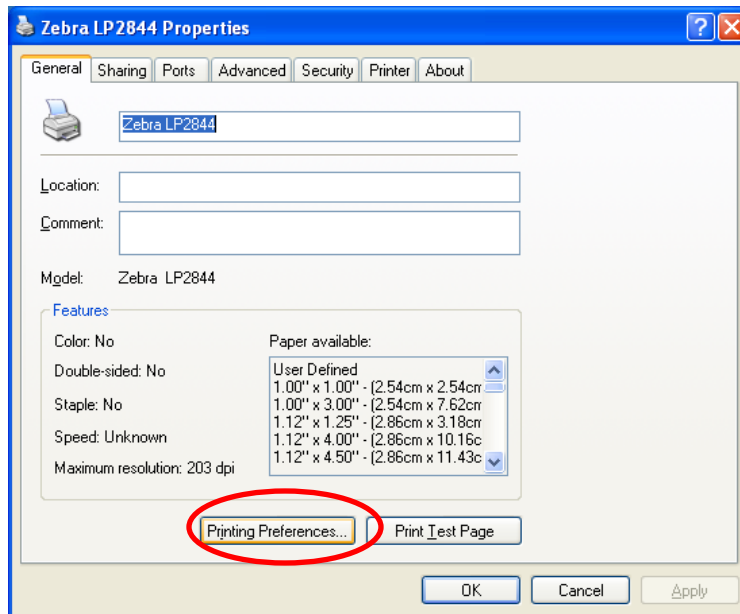
8. Once the install has completed, click **START – SETTINGS – PRINTERS AND FAXES**. Right-click on the **Zebra LP2844** printer and choose **RENAME**. The printer name must be exactly **Zebra LP2844** with only one space between the “a” and the “L”. Once you correct the name, click away from the printer to save the change.



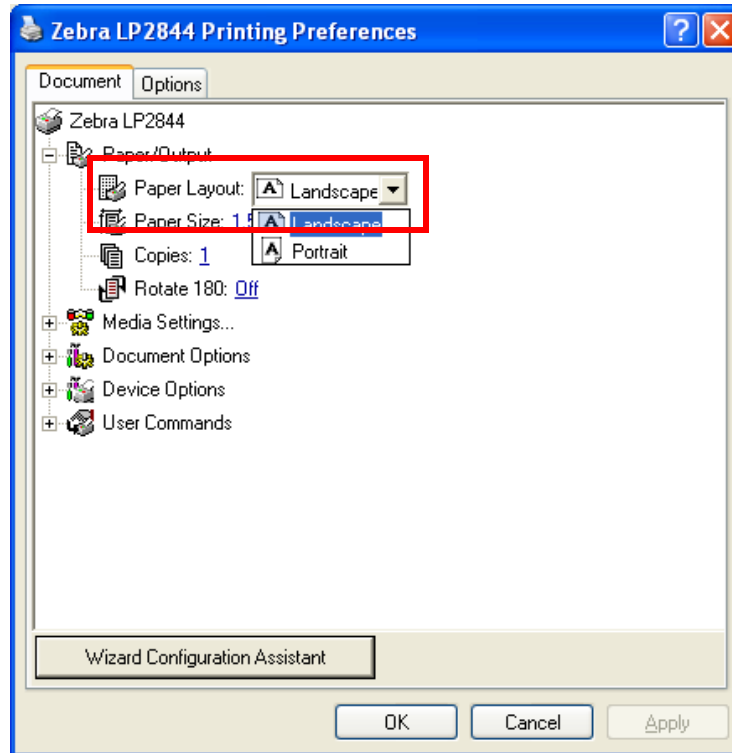
9. Right-click on the **Zebra LP2844** printer and choose **Properties**



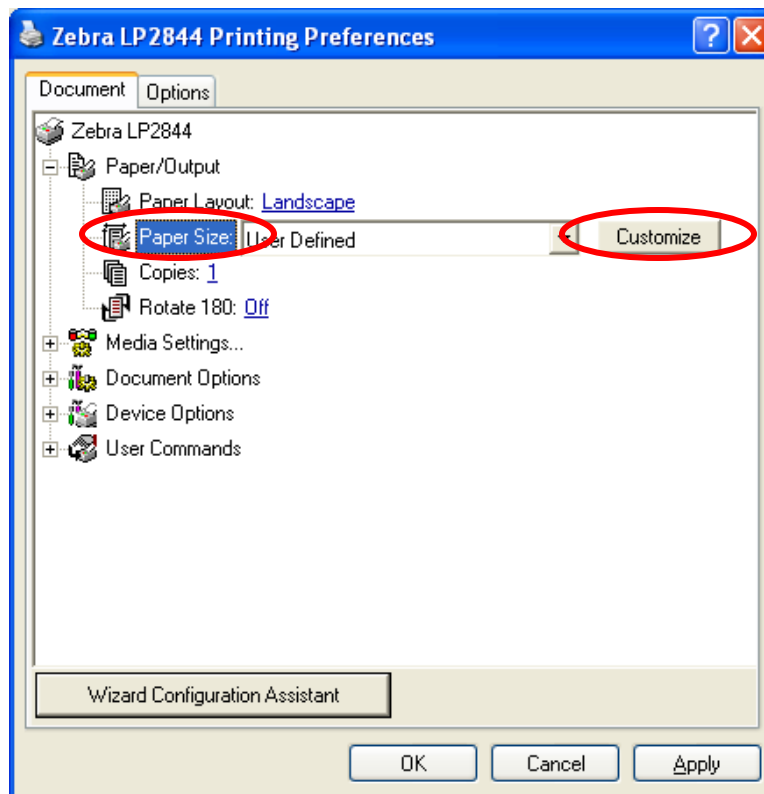
10. On the Properties screen, General Tab, click the **Printing Preferences** button



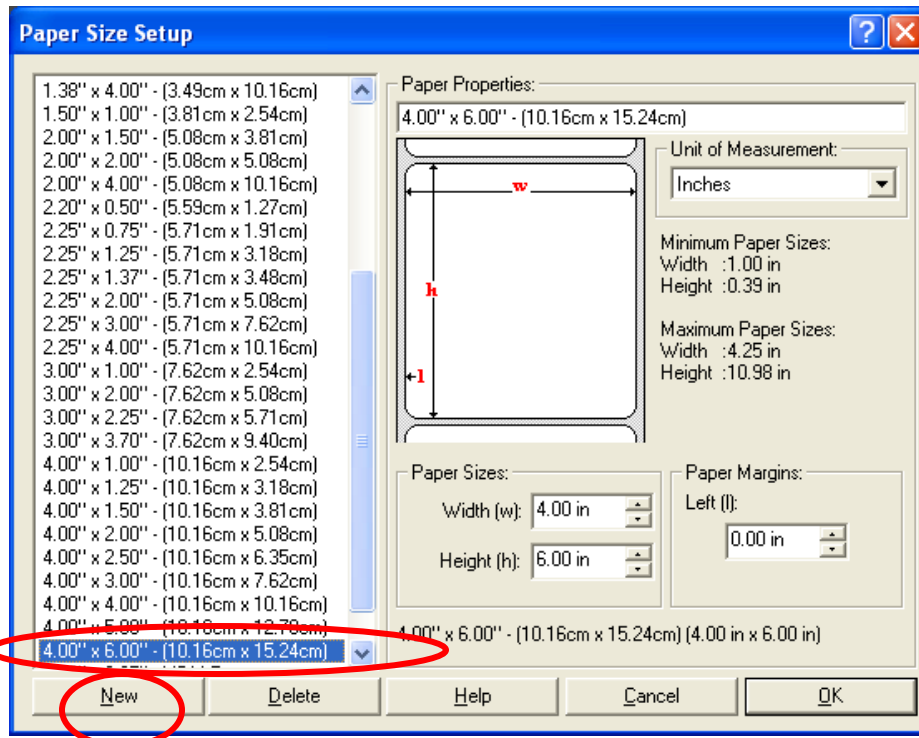
11. On the *Printing Preferences* screen, expand **Paper/Output**, click on the **Paper Layout** and change it to **Landscape**



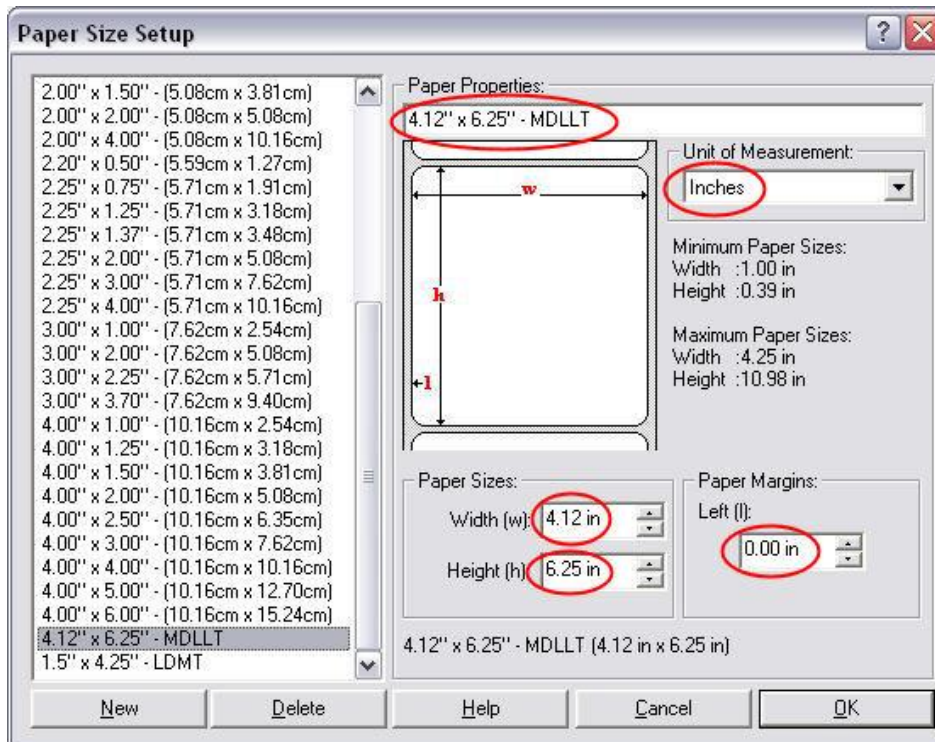
12. Click on **Paper Size** and then on the **Customize** button



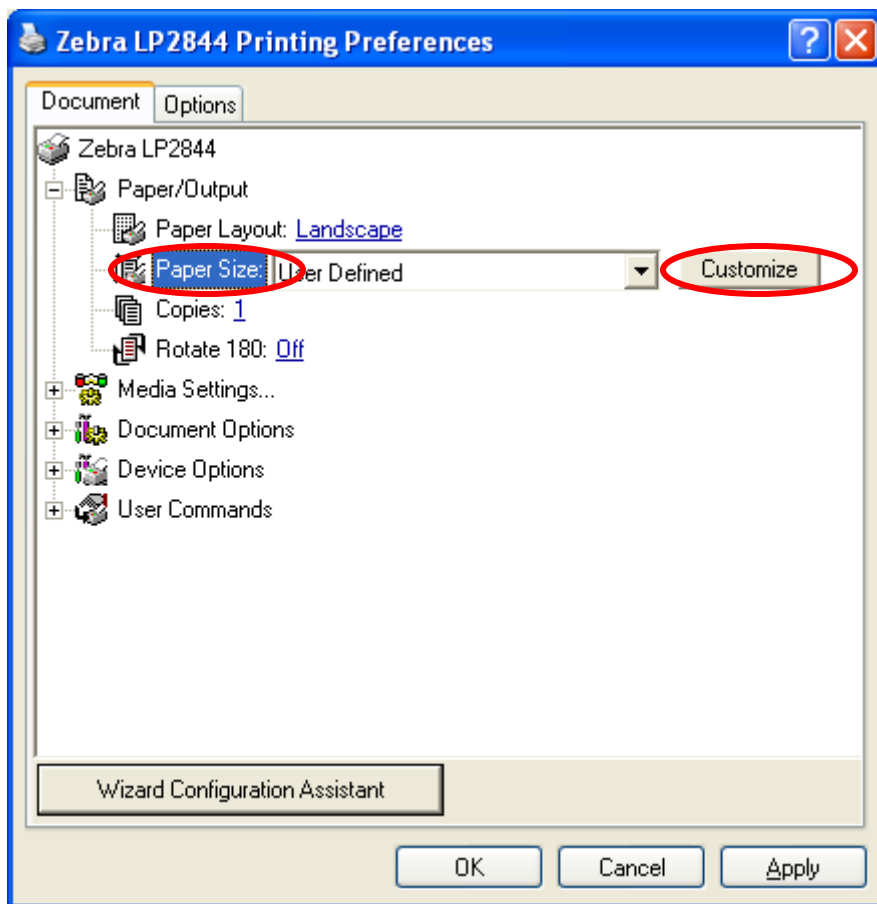
13. On the *Paper Size Setup* screen, select the **4.00" x 6.00"** size on the list and click **NEW**:



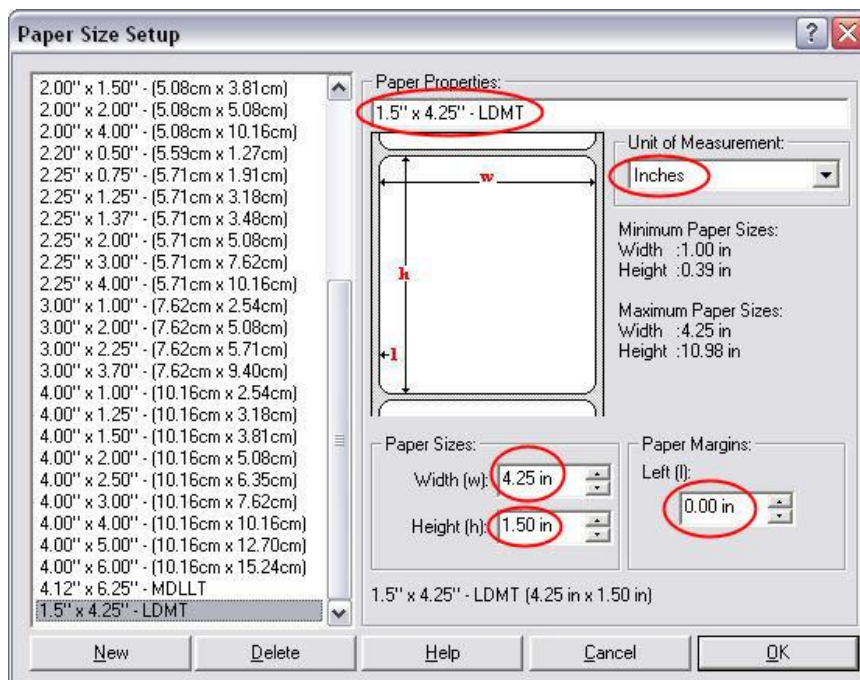
14. Enter all the settings exactly as shown on the right side below and click **OK**:



15. Back on *Printing Preferences*, click the **Customize** button again

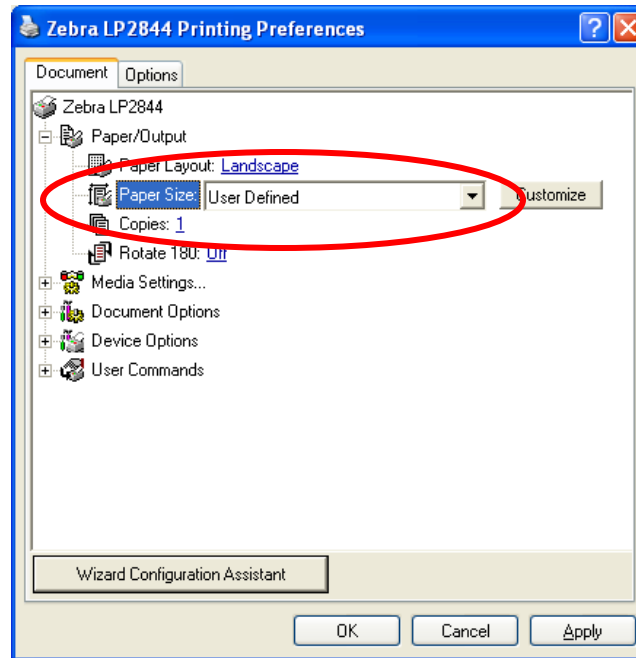


16. Click the New button, enter all the settings exactly as shown on the right side below and click **OK**

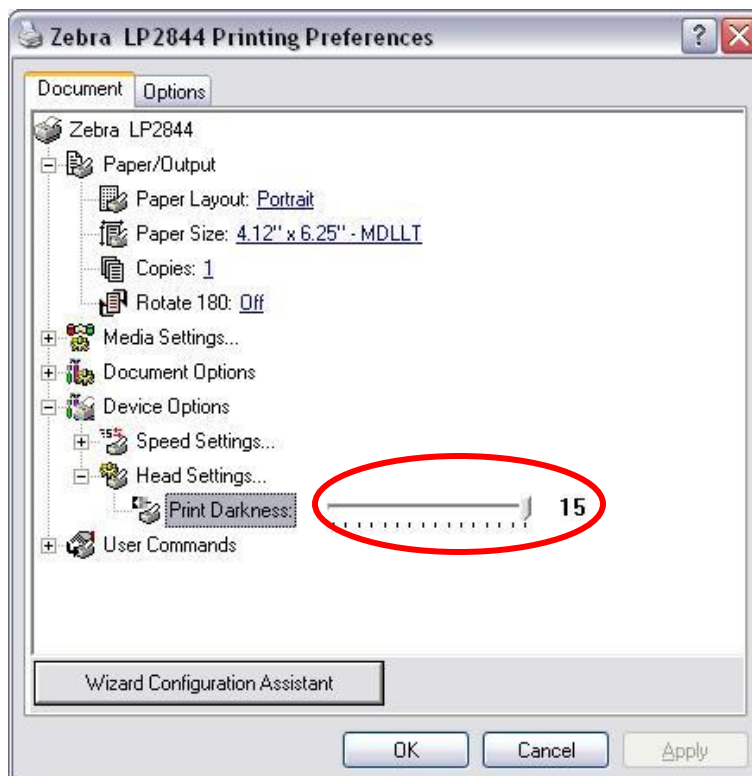


17. Back on the Printing Preferences Screen; set the **Paper Size** according to the labels type you will be using:

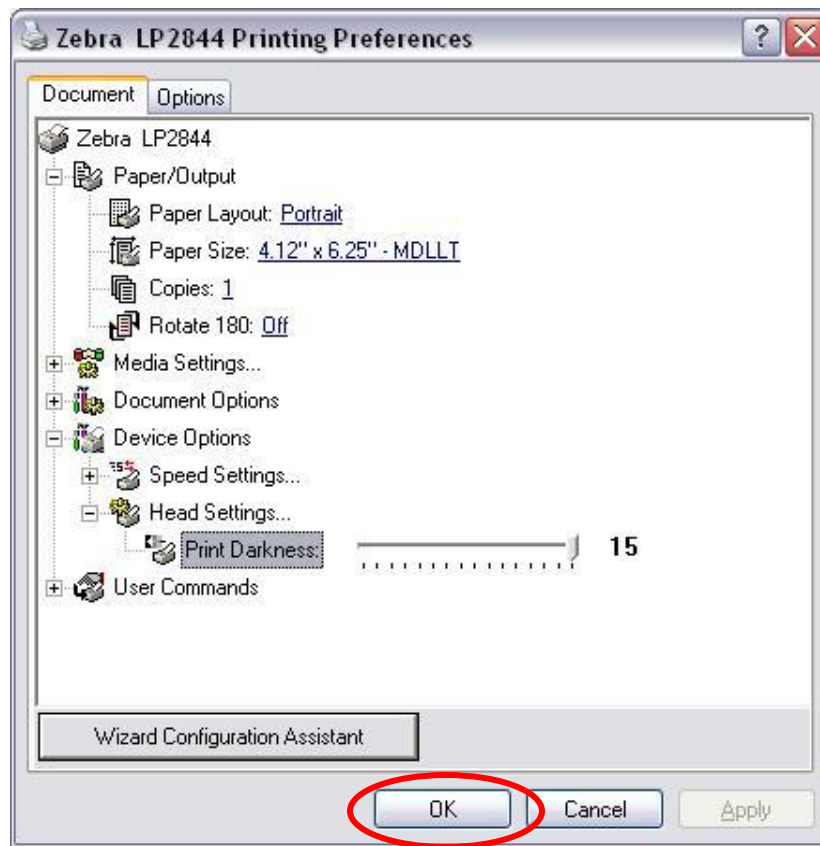
- Only Lid-Labels: **4.12" x 6.25" – MDLLT**
- No Lid-Labels: **1.5" x 4.25" – LDMT**
- Both Lid-Labels and roll styles: **User Defined**



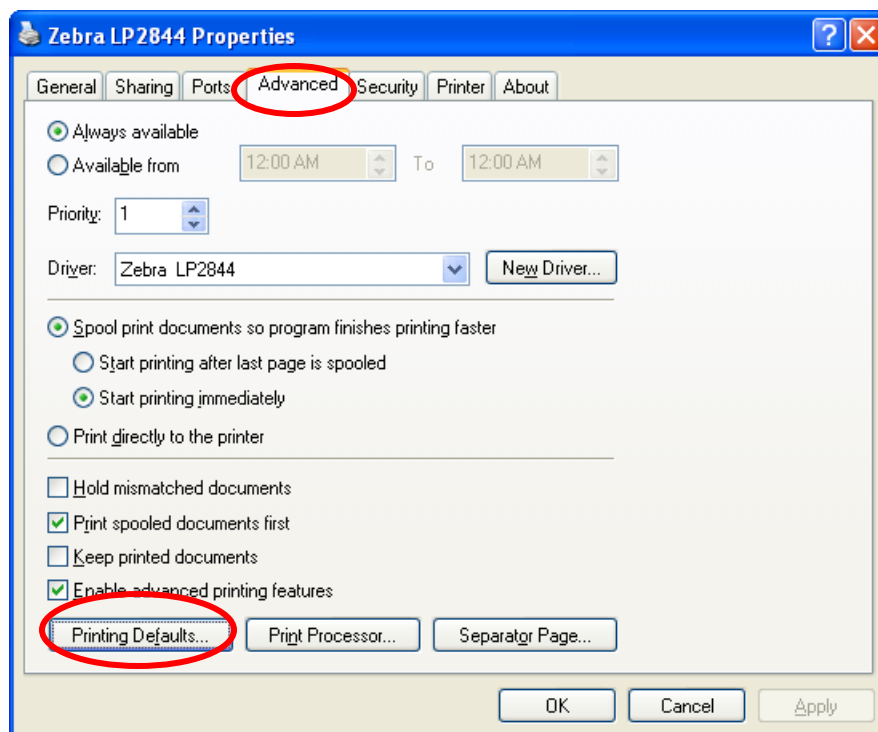
18. Expand **DEVICE OPTIONS – HEAD SETTINGS – PRINT DARKNESS** and change it to **15**. Then click **OK**:



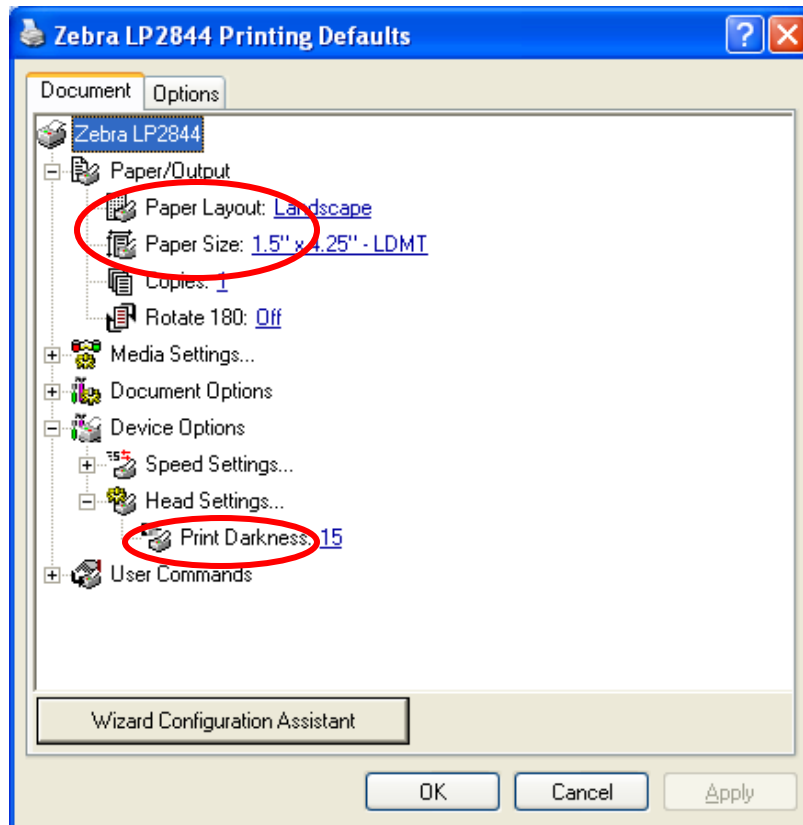
19. Click **OK** to return to the **Printer Properties** page:



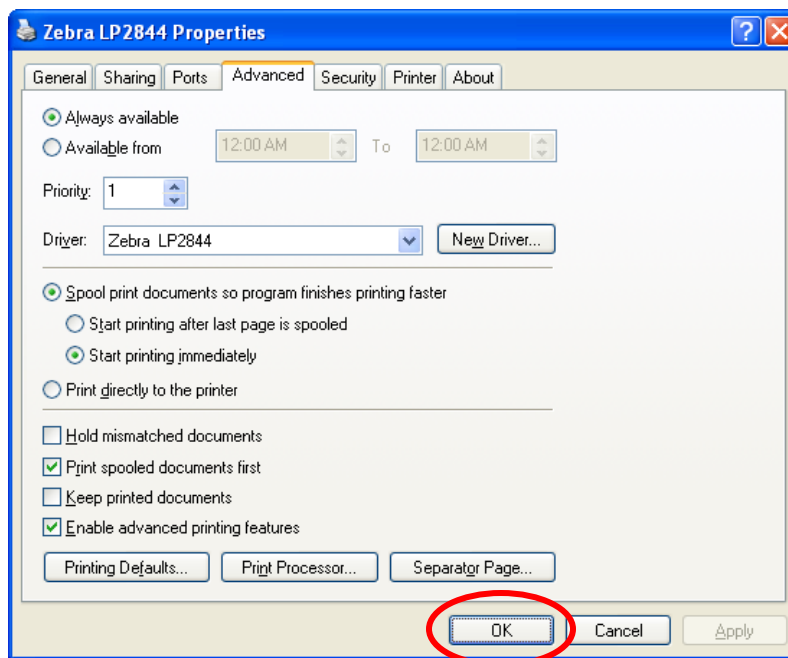
20. On the *Printer Properties* page, go to the **Advanced Tab** and click **Printing Defaults**:



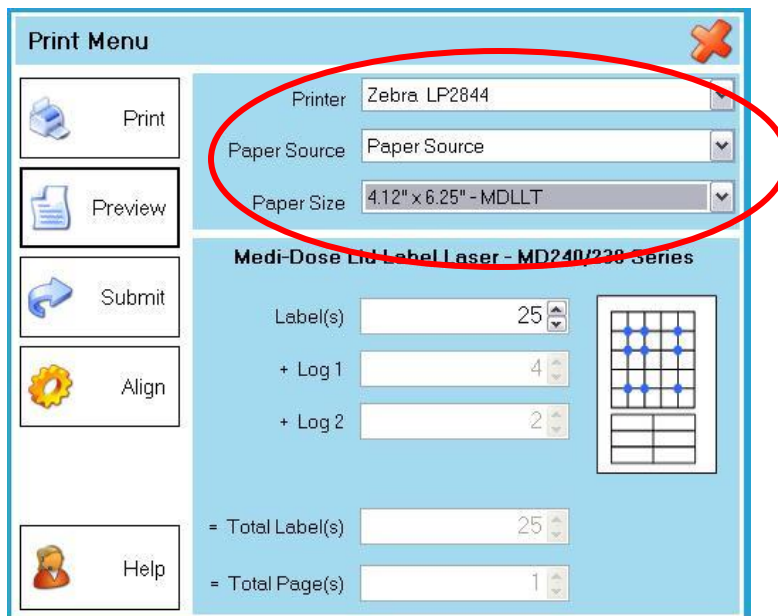
21. Set **Paper Layout**, **Paper Size** and **Print Darkness** to the settings you used for *Printing Preferences* and click **OK** to return to *Printer Properties*:



22. Click **OK** to save all your changes:



23. In the *MILT 3.0* Print Menu, select the **Zebra LP2844**, **Paper Source**, and the **4.12" x 6.25" - MDLLT** Paper Size for the Medi-Dose Lid-Label or the **1.5" x 4.25" - LDMT** Paper Size for any of our other Thermal Labels. After you print, MILT will remember these setting for this type of label.



Medi-Dose[®], Inc.

70 Industrial Drive

Ivyland, PA 18974-6101

Phone: (800) 523-8966 or (215) 396-8600

Fax: (800) 323-8966 or (215) 396-6662

E-Mail: info@medidose.com

Web Site: <http://www.medidose.com>